

# WIKA Climate Strategy: Greenhouse Gas Inventory & Net Zero Strategy

2025

# Scope 1 & 2 GHG Inventory

Scope	2021*	2022*	2023*	2024**
<b>Scope 1/Direct Emissions</b> (tCO <sub>2</sub> e)	105,78	1.042,99	22.879,67	25.923,55
<b>Scope 2 (Location-based)/Indirect Emissions</b> (tCO <sub>2</sub> e)	12.351,22	2.297,14	6.680,14	11.966,97
<b>Scope 1 &amp; 2 Emissions in Total</b> (tCO <sub>2</sub> e)	<b>12.472,33</b>	<b>3.340,13</b>	<b>29.571,18</b>	<b>37.890,52</b>
<b>Emission Intensity</b> (tCO <sub>2</sub> e/Rp Billion)	-	0,16	1,31	2,77

\*During the period 2021–2023, WIKA GHG inventory was conducted using a sampling approach, with the number of samples increasing progressively each year. Starting in 2024 and onwards, the GHG emissions inventory is conducted consistently and comprehensively, covering all WIKA operational activities.

\*\*Restatement

Scope	2021	2022	2023	2024
<i>Scope 3/Other Indirect Emissions</i>				
<b>Cat. 1 - Purchased Goods &amp; Services**</b> (tCO <sub>2</sub> e)	-	-	57.763,78	177.747,99
<b>Cat. 3 - Fuel &amp; Energy-related Activities</b> (tCO <sub>2</sub> e)	-	-	-	2.990,66
<b>Cat. 6 - Business Travel***</b> (tCO <sub>2</sub> e)	15,33	19,34	27,20*	19,52*
<b>Cat. 7 - Employee Commuting</b> (tCO <sub>2</sub> e)	-	-	-	613,64
<b>Cat. 13 - Downstream Leased Assets</b> (tCO <sub>2</sub> e)	-	-	-	10.428,05

\*Restatement

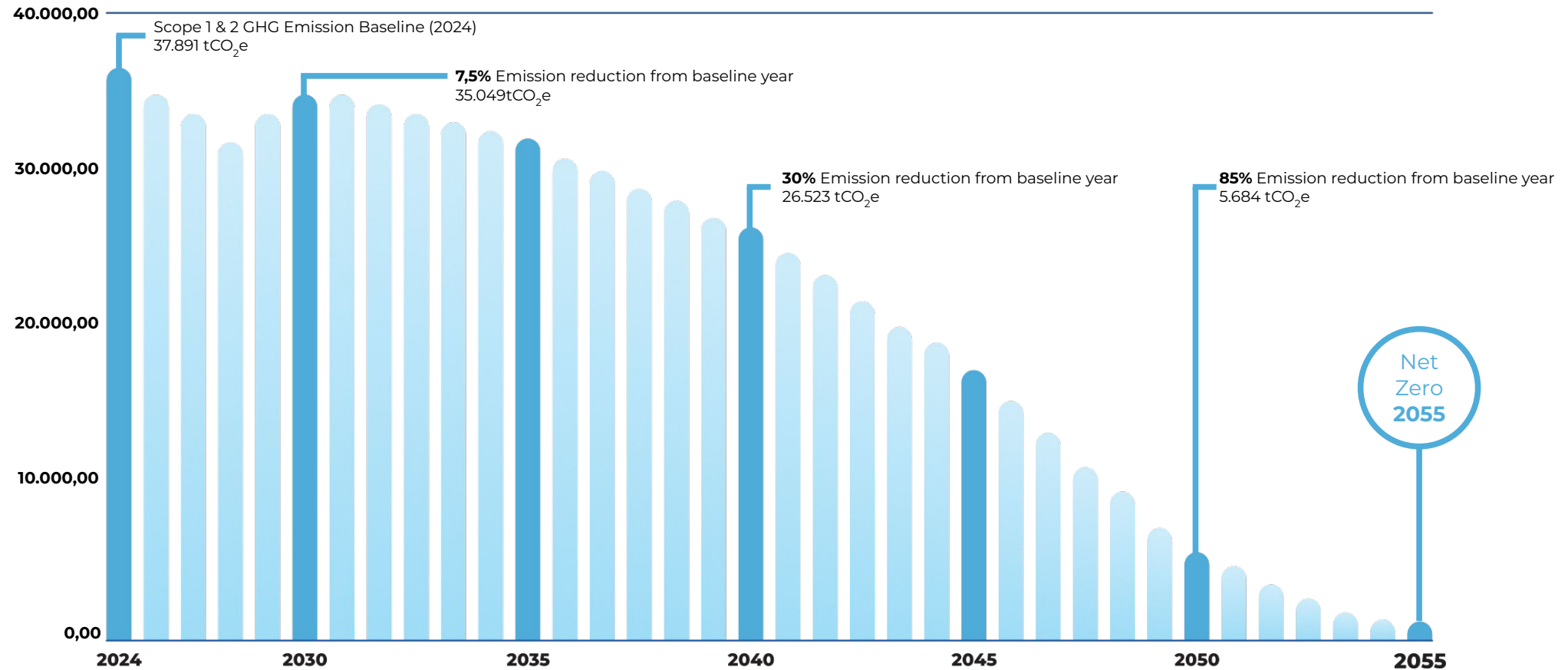
\*\*The collection of data on the procurement of goods and services was initiated on a partial basis in 2023 and was expanded to cover all projects in 2024

\*\*\*Limited to business travel undertaken by the Board of Directors (BoD).

In **2024**, WIKA was able to report emissions across **five Scope 3 categories**:

- **Purchased Goods and Services:** emissions arising from the lifecycle of goods and services procured by the Company to support its business activities;
- **Fuel-and-Energy-Related Activities:** emissions associated with the transportation of fuel to project sites, transmission and distribution (T&D) losses, and upstream electricity generation activities;
- **Business Travel:** emissions from official business travel undertaken by the Board of Directors (BoD);
- **Employee Commuting:** emissions generated from employees' commuting activities to and from the workplace;
- **Downstream Leased Assets:** emissions from leased assets in the form of buildings rented to tenants at several locations across Indonesia.

# PT Wijaya Karya (Persero) Tbk. Net Zero Emission Strategy

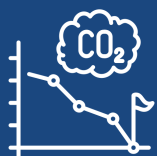


## Baseline Year: 2024

GHG emission trend from 2026 to 2029 is expected to fluctuate due to corporate strategic measures on market availability based on the presidential election year.

Supported by offset initiatives for residual emissions

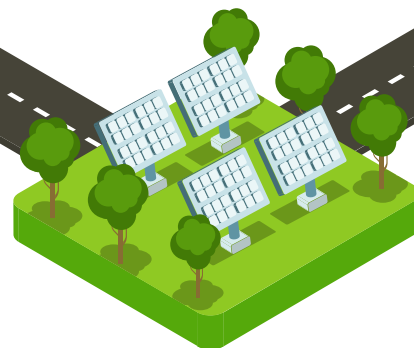
# PT Wijaya Karya (Persero) Tbk. Net Zero Emission Strategy



The emission reduction initiatives are formulated as part of the company's decarbonization strategy, which encompasses a combination of direct emission reduction actions, energy transition measures, and the offsetting of residual emissions in a measurable and gradual manner.

## Renewable Energy-Based Project Operations

- Reducing Scope 2 emissions through the utilization of solar energy and Automatic Voltage Ampere Adjustment (AVAA) technology as sources of clean electricity.
- Relevant for WIKA assets and project sites that require sustainable electricity supply.



## Electrification of Project Operational Fleet

- Transitioning operational vehicles from fossil fuel to electric power to directly reduce Scope 1 emissions.
- Relevant for construction project environments with high mobility and measurable vehicle usage patterns.



## Renewable Energy Certificate

- Supporting Scope 2 emission reduction through claims of electricity consumption sourced from renewable energy.
- Serving as a transitional solution prior to the full on-site implementation of renewable energy systems.
- Increasing the share of renewable energy within WIKA operational energy mix.

## Fuel Transition to Alternative Biofuels

- Substituting fossil fuels with biofuels to reduce Scope 1 emissions.
- Serving as a transitional solution for fleets and heavy equipment that have not yet been electrified.



## Emission Reduction through Nature-Based Solutions

- Offsetting a portion of the company's annual greenhouse gas emissions.
- Acting as a complementary measure to direct emission reduction efforts in achieving Net Zero.





# Thank You

Jl. DI. Panjaitan No.Kav. 9-10, RT.1/RW.11, Cipinang Cempedak,  
Kecamatan Jatinegara, Kota Jakarta Timur, Daerah Khusus  
Ibukota Jakarta 13340